

BOX

FUNCTION & DESIGN

PLEDGE



BOX: FUNCTION & DESIGN

Box represents function and design, providing a robust solution for open space sitting.

The simplicity of its form is achieved by the angular construction. The combination of leather and satin chrome finish create a unique style.

BOX

MATERIALS

FRAME CONSTRUCTION

FSC® certified plywood
Furniture grade fibreboard

FOAM

Combustion Modified High Resilience (CMHR) foam

LEGS: SOFA

30 mm square box steel leg frame
Finish: Satin silver

STOOL FEET

Beech wooden

CASTORS

75 mm twin wheel silver castors

WOOD TOP (TABLE)

18 mm laminated MFC

BASE (TABLE)

Flat steel shaped plate
50 mm tubular steel support
Finish: Satin silver

POLICY

Pledge manufacture in the United Kingdom and are a true manufacturer producing wooden, steel and upholstered products at our site in Leighton Buzzard.

We are committed to the efficient use of energy and continually review our processes to reduce environmental impact seeking to utilise technologies which minimise energy and material consumption in our products and services.

CERTIFICATION

Pledge is ISO9001 & ISO14001 certified, guaranteeing quality and environmental management standards are met.

Furniture Industry Sustainability Programme (FISP)

Furniture Industry Research Association (FIRA)

Forest Stewardship Council® (FSC®)

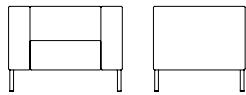
OPERATION

Pledge offers a 5-year warranty on structural components. Fabrics are covered by the manufacturers' guarantee.

These terms apply to Pledge Seating used only in general office environments during normal working hours and subject to fair wear and tear. Terms for seating used 24/7 application are available on request.

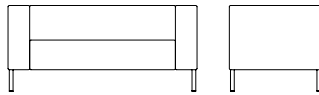
Our full terms concerning warranties can be found in our Seating Price Guide under terms and conditions section 9.

BOX



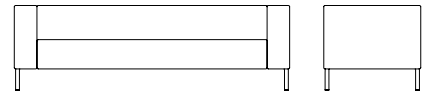
BX1 | Armchair.

Overall Height	730 mm
Overall Width	930 mm
Overall Depth	750 mm
Seat Height	450 mm
Seat Depth	490 mm
Weight	38.7 kg



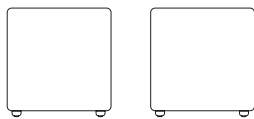
BX2 | 2 Seat Sofa.

Overall Height	730 mm
Overall Width	1530 mm
Overall Depth	750 mm
Seat Height	450 mm
Seat Depth	490 mm
Weight	49.6 kg



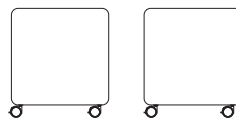
BX3 | 3 Seat Sofa.

Overall Height	730 mm
Overall Width	2130 mm
Overall Depth	750 mm
Seat Height	450 mm
Seat Depth	490 mm
Weight	64.3 kg



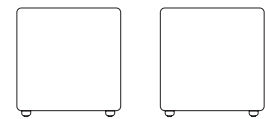
BXC1 | Square Stool Wooden feet

Overall Height	470 mm
Overall Width	440 mm
Overall Depth	440 mm
Seat Height	470 mm
Seat Depth	440 mm
Weight	8.2 kg



BXC2 | Square Stool with Castors.

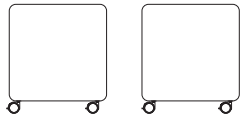
Overall Height	510 mm
Overall Width	440 mm
Overall Depth	440 mm
Seat Height	510 mm
Seat Depth	440 mm
Weight	8.2 kg



BXC3 | Round Stool with Wooden feet.

Overall Height	470 mm
Overall Width	440 mm
Overall Depth	440 mm
Seat Height	470 mm
Seat Depth	440 mm
Weight	8.2 kg

BOX



BXC4 | Round Stool with Castors.

Overall Height	510 mm
Overall Width	440 mm
Overall Depth	440 mm
Seat Height	510 mm
Seat Depth	440 mm
Weight	8.2 kg



BXT3 | 480 X 480 mm Coffee Table

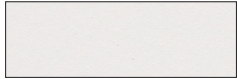
Overall Height	400 mm
Overall Width	480 mm
Overall Depth	480 mm
Top Depth	480 mm
Top Thickness	25 mm
Weight	10 kg

BXT4 | 680 X 680 mm Coffee Table.

Overall Height	400 mm
Overall Width	680 mm
Overall Depth	680 mm
Top Depth	680 mm
Top Thickness	25 mm
Weight	12 kg

BOX

TABLE TOP FINISH



White (WH)



Walnut Stain (WL)

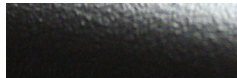


Light Oak Stain (LO)

METAL FRAME & FEET FINISH



Silver RAL9006 (P)



Black RAL9011 (B)



Chrome (C)

OPTIONS

Pixel, Proton, Puma & Aircharge Power & Data Options Available.

NOTES

Our standard finish is beech frames with a clear lacquer representing Light Oak.
This finish should not be considered a match to any Light Oak product, and samples should be requested if matching is required.

ENVIRONMENTAL

Recycled Content: 10% (estimated)

Recyclable Content: 98%

