

# HYDE

MULTI-CONFIGURATION BOOTH

**PLEDGE**



## HYDE: MULTI-CONFIGURATION BOOTH

---

Hyde is a multi-configurable booth which delivers plenty of space to build a comfortable collaboration or meeting zone.

Built with sturdy wood panels and finished with foam and fabrication, Hyde is naturally sound absorbent, keeping your space defined.

# HYDE

---

## MATERIALS

### FRAME CONSTRUCTION

FSC® certified plywood  
Furniture grade fibreboard

### FOAM

Upholstered panels  
Combustion Modified High Resilience Foam (CMHR)

### GLASS FRONT

25 mm single glazed system  
Metal frame with door lock  
Finish: Black (RAL 9011)

### TABLES

25 mm laminated MFC table top  
50 mm tubular steel upright  
Finish: Satin Silver  
Chrome round steel plate - HY-3T table only

## POLICY

Pledge manufacture in the United Kingdom and are a true manufacturer producing wooden, steel and upholstered products at our site in Leighton Buzzard.

We are committed to the efficient use of energy and continually review our processes to reduce environmental impact seeking to utilise technologies which minimise energy and material consumption in our products and services.

## CERTIFICATION

Pledge is ISO9001 & ISO14001 certified, guaranteeing quality and environmental management standards are met.

Furniture Industry Sustainability Programme (FISP)

Furniture Industry Research Association (FIRA)

Forest Stewardship Council® (FSC®)

## OPERATION

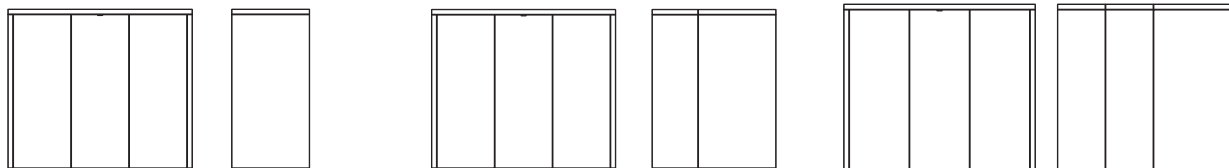
Pledge offers a 5-year warranty on structural components. Fabrics are covered by the manufacturers' guarantee.

These terms apply to Pledge Seating used only in general office environments during normal working hours and subject to fair wear and tear. Terms for seating used 24/7 application are available on request.

Our full terms concerning warranties can be found in our Seating Price Guide under terms and conditions section 9.

# HYDE

---



## HY-2 | 2 Seat Booth.

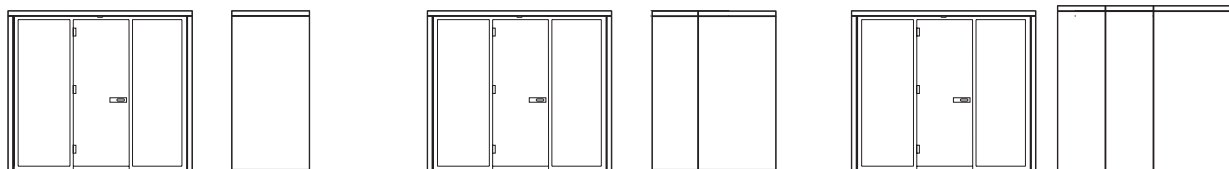
Overall Height	2115 mm
Overall Width	2408 mm
Overall Depth	1030 mm
Seat Height	- mm
Seat Depth	- mm
Weight	88 kg

## HY-4 | 4 Seat Booth.

Overall Height	2115 mm
Overall Width	2408 mm
Overall Depth	1786 mm
Seat Height	- mm
Seat Depth	- mm
Weight	128 kg

## HY-6 | 6 Seat Booth.

Overall Height	2115 mm
Overall Width	2408 mm
Overall Depth	2542 mm
Seat Height	- mm
Seat Depth	- mm
Weight	168 kg



## HYD-2 | 2 Seat Booth with Glass Front.

Overall Height	2115 mm
Overall Width	2408 mm
Overall Depth	1030 mm
Seat Height	- mm
Seat Depth	- mm
Weight	253 kg

## HYD-4 | 4 Seat Booth with Glass Front.

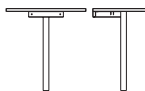
Overall Height	2115 mm
Overall Width	2408 mm
Overall Depth	1786 mm
Seat Height	- mm
Seat Depth	- mm
Weight	293 kg

## HYD-6 | 6 Seat Booth with Glass Front.

Overall Height	2115 mm
Overall Width	2408 mm
Overall Depth	2542 mm
Seat Height	- mm
Seat Depth	- mm
Weight	333 kg

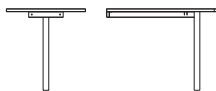
# HYDE

---



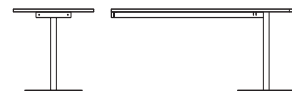
## HY-T1 | Single Table.

Overall Height	720 mm
Overall Width	700 mm
Overall Depth	470 mm
Seat Height	- mm
Seat Depth	- mm
Weight	11 kg



## HY-T2 | Double Table.

Overall Height	720 mm
Overall Width	700 mm
Overall Depth	1000 mm
Seat Height	- mm
Seat Depth	- mm
Weight	15 kg



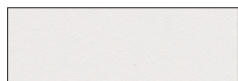
## HY-T3 | Treble Table.

Overall Height	720 mm
Overall Width	700 mm
Overall Depth	1600 mm
Seat Height	- mm
Seat Depth	- mm
Weight	30 kg

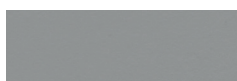
# HYDE

---

## TABLE TOP FINISH



White (WH)



Grey (GY)



Black (BK)



Walnut (WL)

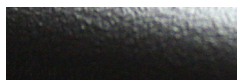


Light Oak (LO)

## METAL LEG FINISH



Silver Painted (Standard)



Black (B) (RAL 9011)

## OPTIONS

Hyde Joining Roof Panel (HY-R)

Spotlights (SL)

TV Bracket (HY-TVB)

Proton & Puma Power & Data options available

Two Tone Upholstery 10% upcharge (2T)

Twin row of dots Window Film Option (RD)

Twin row of squares Window Film Option (RS)

1200 mm Frosted Band Window Film Option (FB)

## NOTES

All Fabric Group prices are based on screen fabric with a width of 1700 mm.

HY-3T Disc Base only available as Chrome as standard.

## ENVIRONMENTAL

Recycled Content: 12% (estimated)

Recyclable Content: 98%

